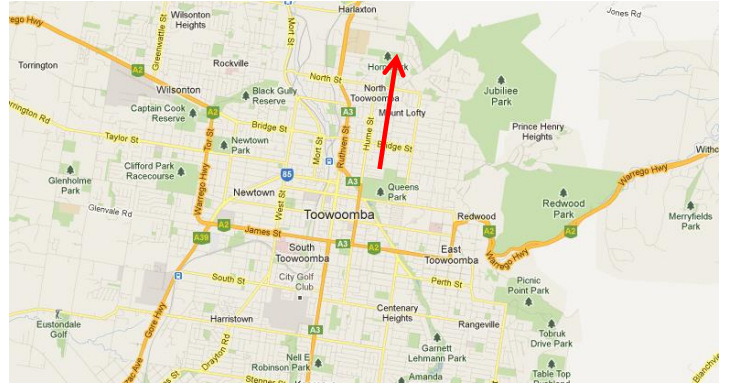


Toowoomba to Cooby Dam Directions

Leave Toowoomba heading north along Ruthven Street – continue out of the city heading towards Highfields

Ruthven Street turns into the New England Highway

Travel approximately 14 km

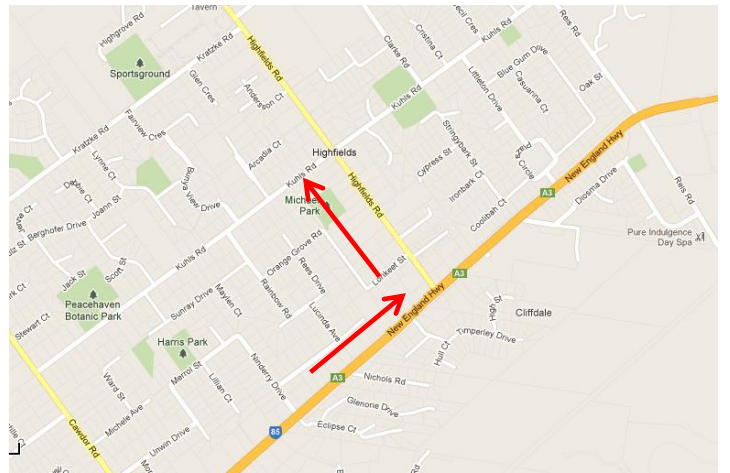


As you approach Highfields you will pass the following:-

- BP Service Station on Left
- Shell Service Station on Left

Approximately 50 meters past the Shell Service Station turn **LEFT** on to Highfields Road

There is a brown “Cooby Dam” to sign to follow.



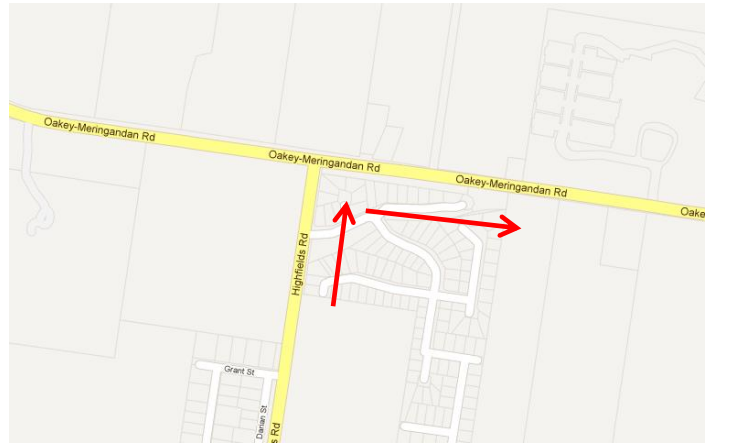
Follow Highfields Road for approximately 4.4 km through the centre of Highfields.

Continue along Highfields Road heading towards Meringandan.

The road will come to a “T” intersection.

Turn **RIGHT** on to Oakey-Meringandan Road.

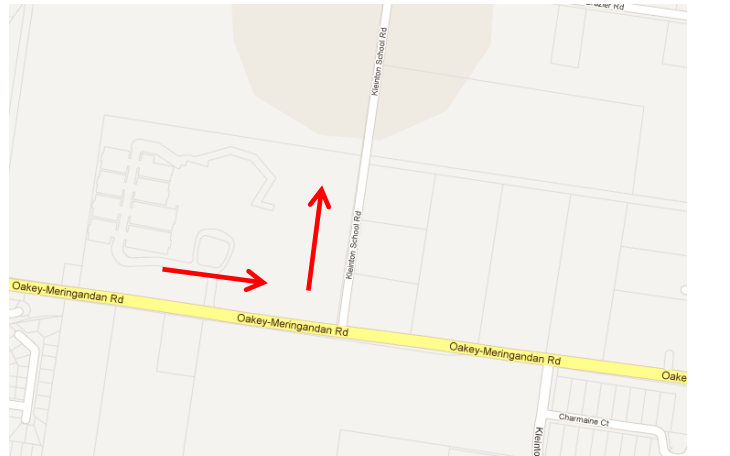
There is a brown “Cooby Dam” to sign to follow.



Follow Oakey-Meringandan Road for approximately 1km.

Turn **LEFT** on to Klienton School Road.

There is a brown “Cooby Dam” to sign to follow – but sometimes hard to see.



Follow Klienton School Road for approximately 800 meters.

Turn **LEFT** on to Klien Road.

There is a brown “Cooby Dam” to sign to follow.



Following Klien Road for approximately 2.7 km (making sure to stick with the bitumen road).

Klien Road will turn into Cooby Dam Road.

You will come to a fork in the road that is a little confusing.

The left hand fork leads to the Dam Wall (there is a pipeline running along this road) – **DO NOT TAKE THIS ROAD – IGNORE THE “COOBY DAM” SIGN.**

Drive **STRAIGHT** ahead towards Loveday Cove and Cooby Dam.



Follow Cooby Dam Road for approximately 2.7 km until you reach the Cooby Dam boom gate.

Boom Gate Fee \$3.00

Head **STRAIGHT** to the water once through the boom gate.

If you turn right you will be visiting the public facilities and fishing boat ramp.

